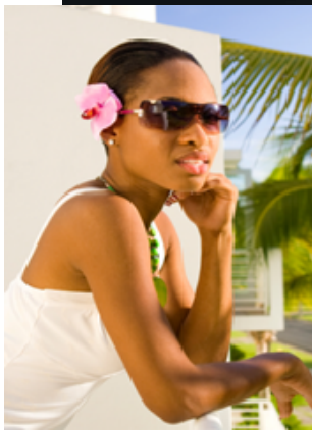


SMILE: Linkage to Care for HIV+ Youth

An Initiative of Connect to Protect® Miami



What is SMILE?

SMILE stands for **S**trategic **M**ulti-site **I**nitiative for the **I**dentification, **L**inkage, and **E**ngagement in **C**are. This program is a collaboration between the Miami-Dade County Health Department and the University of Miami, Division of Adolescent Medicine to link HIV positive youth ages 13-24 to medical care and case management.

The ultimate goal is to ensure that all youth diagnosed with HIV are linked with HIV medical care and case management services

How can SMILE benefit you and your agency?

- SMILE support is flexible and can be tailored to the specific needs of your agency
- SMILE staff is available on call ready to begin the linkage to care process immediately
- SMILE is a free resource for both public and private agencies
- SMILE can facilitate acquisition of required Ryan White documentation

Contact

Grechen Mills, BS
Office: 305-243-3786

Email: gmills@med.miami.edu

SMILE is for...

**HIV positive youth
13 to 24 years old**



**Newly Diagnosed,
never in care**

OR

Out of care 6 months or more

How can SMILE benefit your HIV+ clients?

- SMILE will guide and support client regardless of where they choose to get care
- SMILE can provide emotional support and help reduce HIV anxiety about being positive
- SMILE can provide transportation to medical appointments
- SMILE can provide overall system guidance to other community services
- SMILE can provide linkage to case management services